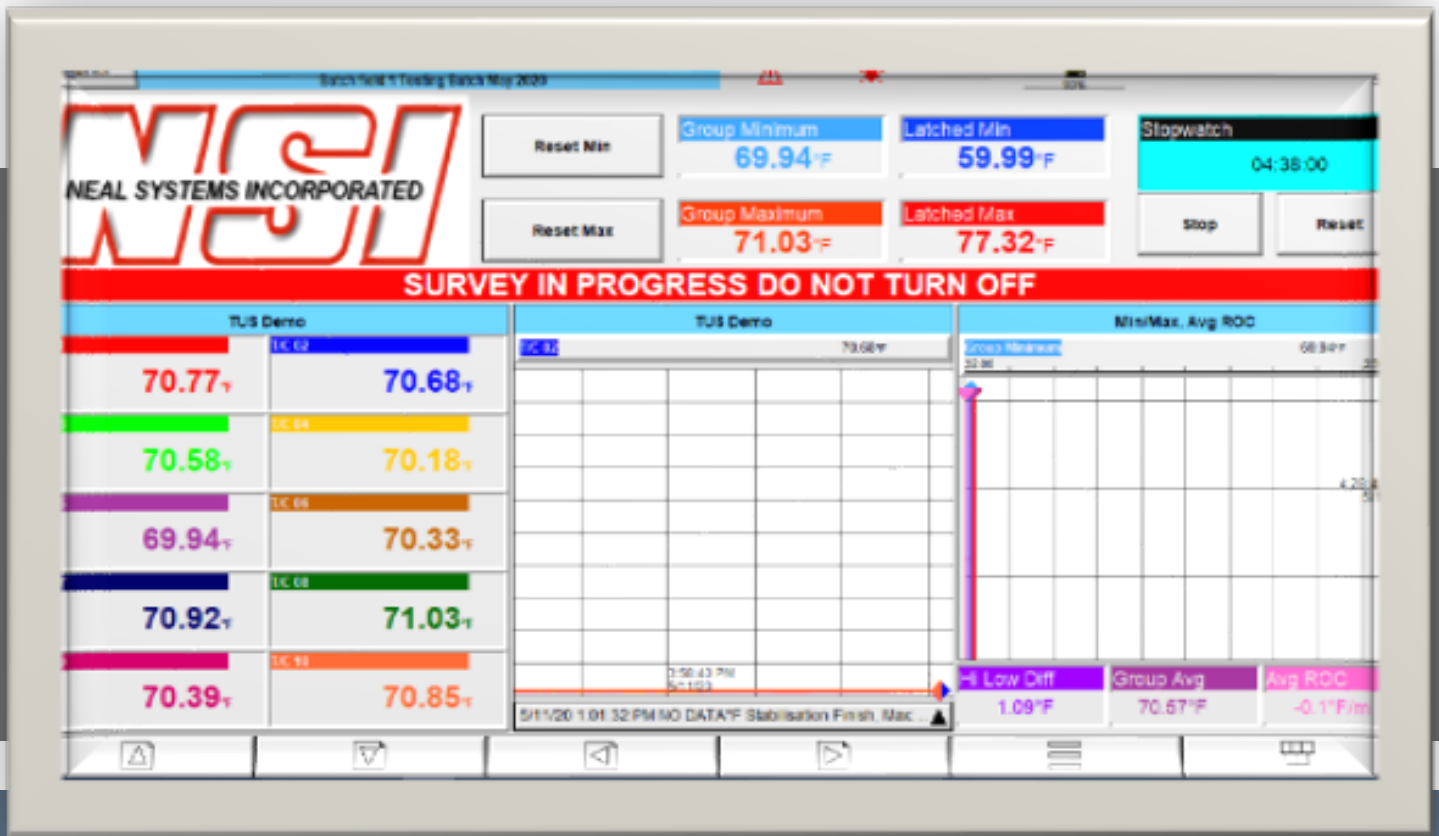


ACCREDITED MAINTENANCE AND CONSULTING TO IMPROVE HEAT TREATMENT NADCAP COMPLIANCE



GET BACK ON TRACK WITH
OUR ISO17025 CERTIFIED
SERVICES



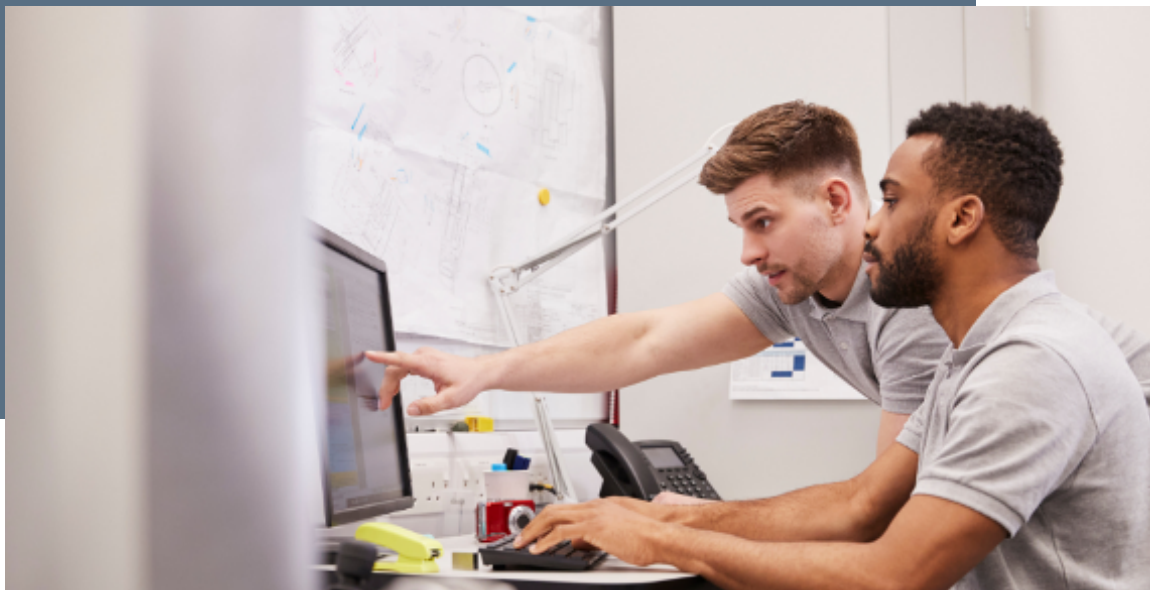
Neal Systems Inc. (NSI) provides title-accredited maintenance and consulting services to help your process comply with AMS2750G.

Our Services

- NADCAP Consulting
- ISO17025 Field and Lab Calibrations
- System Accuracy Test (SAT)
- Thermal Uniformity Survey (TUS)

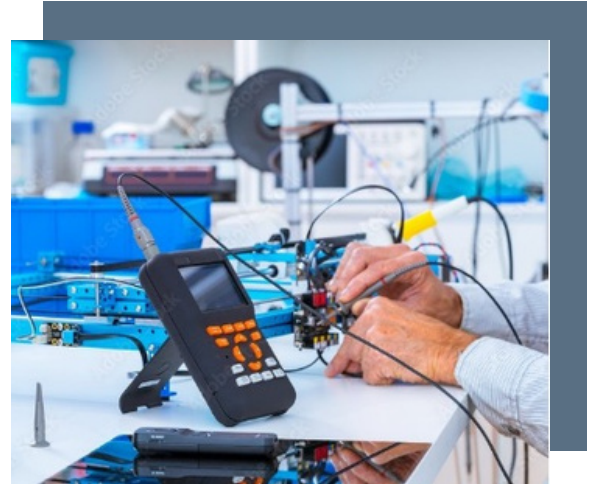
NADCAP Consulting

If you've got an upcoming NADCAP audit or even recently failed an audit, consider our consulting services. With several highly experienced field service technicians, we provide onsite or offsite consulting to help customers pass audits and reduce audit frequency.



ISO17025 Field and Lab Calibrations

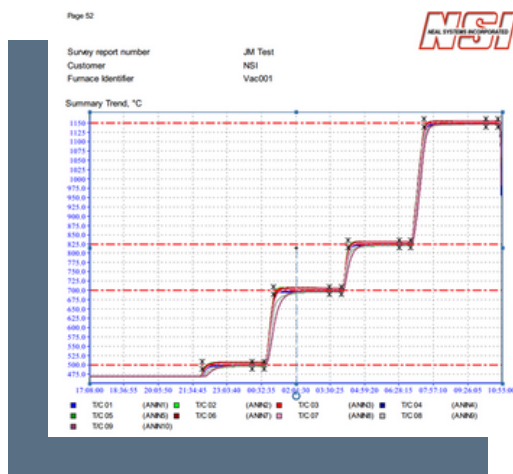
The new AMS2750 revision requirements state that all field and lab calibrations must be performed by an ISO17025 certified company. NSI provides offsite calibrations for all of your equipment in our Newtown lab as well as onsite calibrations, System Accuracy Tests (SAT), and Temperature Uniformity Surveys (TUS) across the country.



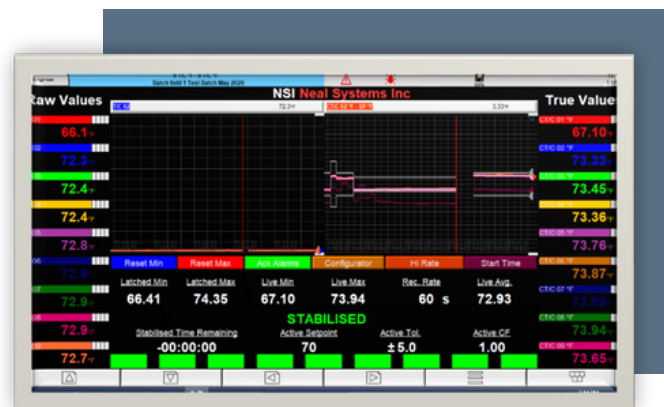
See our scope at <https://search.anab.org/>

System Accuracy Test and Temperature Uniformity Surveys

Temperature Uniformity Survey reports are a mandatory part of AMS2750 pyrometry compliance. With the advent of digital recorders, NSI uses Eurotherm's database management in the Review SCADA platform to automate the production of required reports. This is accomplished by combining the secure (.uhh files) data from a Field Test Instrument with the database management of Eurotherm Review. This directly produces tamper-proof reports that comply with the requirements of AMS2750G.



Example TUS Report



6180A Screen Running TUS Software

How can NSI help each member of your staff?

Senior management	<ul style="list-style-type: none"> • Distributed KPI's with cloud integration
Quality control	<ul style="list-style-type: none"> • Planned maintenance with highly qualified staff • ISO17025 • Immediate reports issued through our Beamex CMX software • NADCAP consulting
Production Supervisor	<ul style="list-style-type: none"> • Operational KPI's • Centralized alarming • Protected operational logs
Engineering	<ul style="list-style-type: none"> • Design consultation • Process optimization
Maintenance	<ul style="list-style-type: none"> • Predictive element failure • Thermocouple aging • Customizable alerts to conduct maintenance
Purchasing	<ul style="list-style-type: none"> • Reduce costs through visibility into upcoming failures allow for preventive rather than emergency maintenance • Reduce power consumption and therefore lifetime operational cost
Operators	<ul style="list-style-type: none"> • Easy-to-navigate screens • Central control stations



215-968-7577



www.nealsystems.com



sales@nealsystems.com